

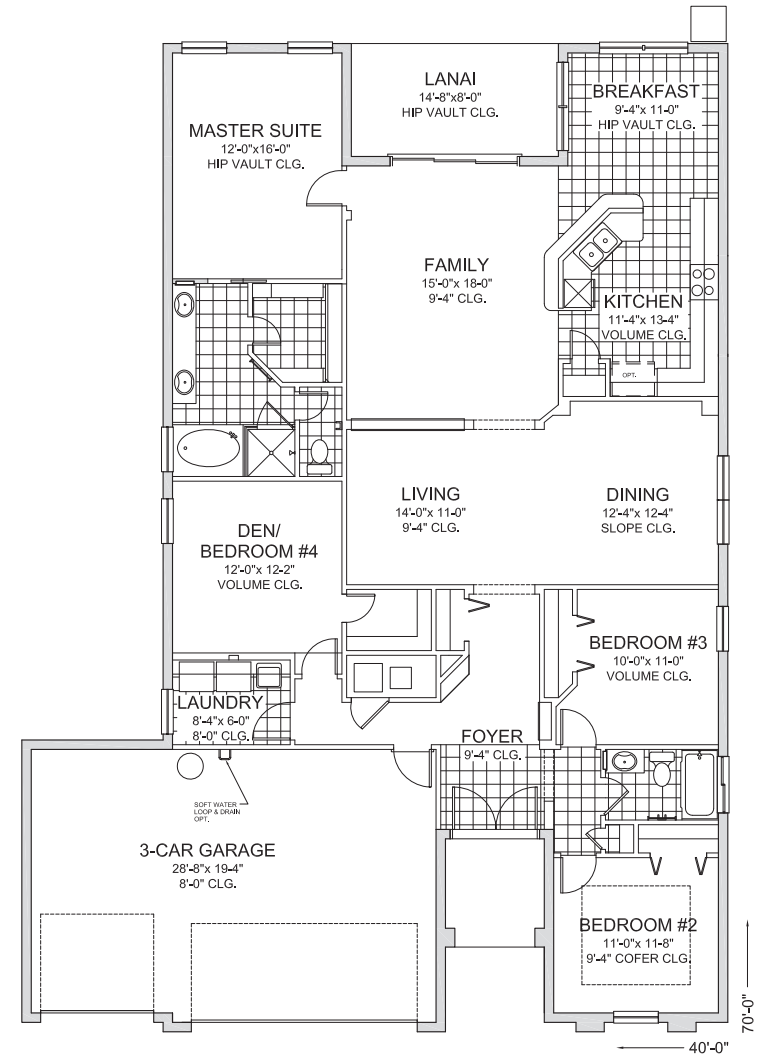
Woodvine



Elevation A
3 Car Garage



Elevation B
3 Car Garage



Floor Plan

FIRST FLOOR LIVING	2182 SQ. FT.
COVERED ENTRY	54 SQ. FT.
COVERED LANAI	117 SQ. FT.
3 CAR GARAGE	596 SQ. FT.
TOTAL:	2949 SQ. FT.



Woodvine - 2182 sq. ft. living area

"Suarez Housing Corporation" is a trademark registered to Suarez Homebuilding Group, Inc. and licensed to independently owned and operated building companies using the Suarez Housing Corporation trademark. Note: Because we are constantly improving our product, exterior designs and floorplans are subject to change without notice. Dimensions are approximate. CRC#1328692 © August 2011 Suarez Homebuilding Group, Inc."